

BWTS end-to-end Integration for 3 OSVs

CLIENT OFFSHORE FLEET OPERATOR

YEAR 2022

PLATFORM TYPE

Offshore TUG / Supply Vessel

CLASS

American Bureau of Shipping (ABS)

SOW

3D scan, Feasibility, Engineering & Class Approval,
Installation supervision



25

DAYS OF OPERATION SAVED

3

VESSELS SCANNED SIMULTANEOUSLY

0

DOWNTIME DAYS

CLIENT CONTEXT

Preparing three OSVs for modification

An esteemed offshore fleet operator approached GLO MARINE with a challenging yet critical project. The task was to conduct a detailed survey, 3D scanning, and engineering for three Offshore Supply Vessels (OSVs) from their fleet of six.

This project was not just about precision and technical expertise but also about the efficiency of execution within a demanding timeframe.

THE WORK TO BE DONE

Project phases

- 3D laser scanning & Survey
- Feasibility study
- Engineering & class approval
- Installation Supervision

THE CHALLENGE

Multi-vessel execution under time pressure

The project's main challenge was the limited space within the engine rooms, demanding precise integration of new equipment without disrupting existing systems. Additionally, the project required simultaneous surveys and scans across all three vessels, adding layers of complexity to our task.

Compounding these challenges was the ambitious deadline: completing the entire engineering and design process for all three vessels within a mere 6 weeks. This required exceptional project management and efficient execution from our team.

Involvement of GLO Marine throughout the project stages

01. 3D Scanning & Survey

Dedicated field service teams deployed to remote location in Indonesia where ships were berthed for other retrofitting jobs and performed 3D scans of engine room and survey for all 3 vessels in just 3 days.

02. Feasibility Study

Advanced feasibility study and troubleshooting to determine the best cost and time effective solutions in order to minimize impact on existing structures. Our experts provided consultancy to client regarding the choice of the best BWTS that suited client requirements.

03. Basic Design & Class Approval

Design team prepared the documents for basic design in accordance with the actual regulations. Engineering optimisation required due to lack of space in engine room for each of the 3 vessels. Engineering review performed with vendor company done almost simultaneously with the basic design package.

04. Detail Design

Design Team successfully integrated all the challenges caused by very limited available space onboard. Our main objective was to complete the model, taking into consideration: minimum impact onboard, system functionality, cost efficient solutions and less site work to be done in the installation phase.

05. Installation Supervision

Client has appointed GLO MARINE to supervise and coordinate the future installation process onboard the 3 vessels.

The outcomes

Final results

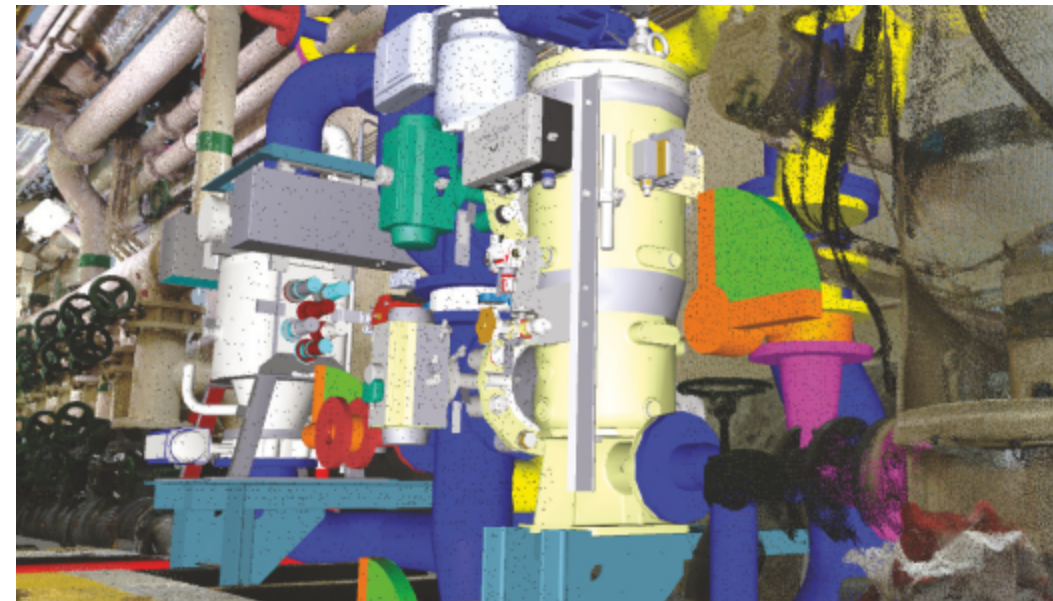
- Cost savings from efficient planning & project management
- No time lost
- Best engineering solution for optimized installation process
- 3 vessels scanned at the same time by 2 teams
- No downtime – engineering completed in record time of 3 weeks for all 3 vessels
- Peace of mind during the whole process – very good communication and status control

The whole process of the ballast water treatment system integration was completed in an excellent timeframe of one month, as demanded by the client, in order not to have even a day of downtime.

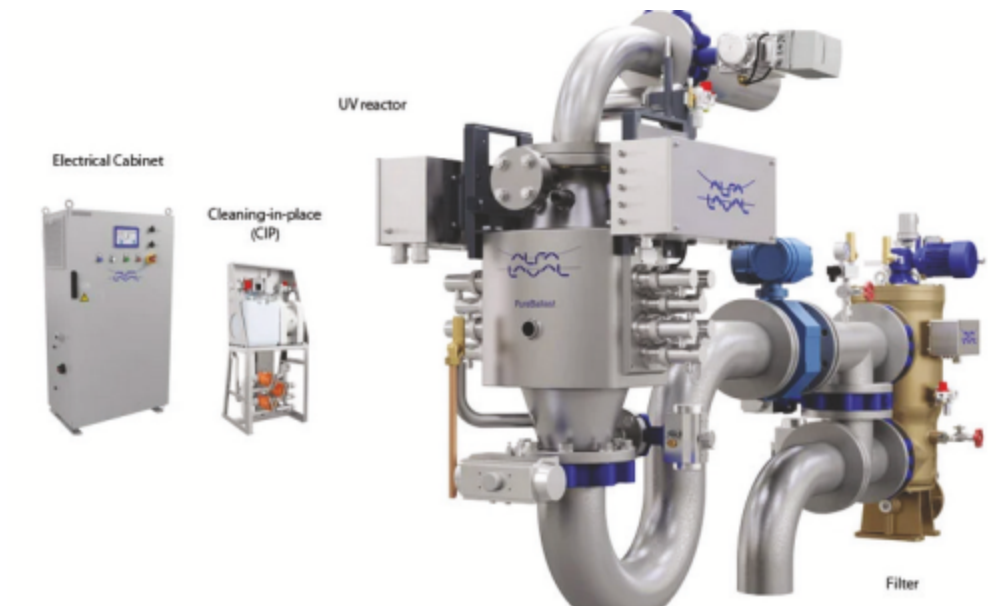
As a result of the accuracy of the scanning and the excellent collaboration between the planning and engineering departments, the project was executed millimeter level accuracy.



Optimized arrangement of a ballast water treatment system on OSV multiplied by 3 vessels.



Ballast water treatment system arrangement kept aligned to existing ballast system width across the passageway.



Alfa laval main components of a ballast water treatment system.

GLO Marine

Your vessel upgrade partner

Bucharest ^{RO}

Biharia 26, First Floor
+40 (0) 336 401 047

Galați ^{RO}

Aleea Școlii 3
+40 (0) 336 401 047

Mangalia ^{RO}

I.C Brătianu 2, Delphine Comar Building
+40 (0) 757 065 058

Woking ^{UK}

3 Radstone Court, Hillview Road, GU22 7NB
+44 (0) 7795 322 207
+44 (0) 7786 392 636

www.glo-marine.com

contact@glo-marine.com

Work with us

Contact our retrofit specialist for details

 inquiries@glo-marine.com

 [+40790870949](https://wa.me/40790870949)